

Double Bass

# Mille Sonitus

Overture of a Thousand Sounds

Marc Parella



## Performance Notes:

Performers should refrain from adding unnecessary crescendi or decrescendi unless specifically notated. The purpose of applying highly expressive dynamics is to create a natural decay effect similar to an echo in the section or ensemble. At times the decay effect will deteriorate to a ppp and the performer's passage may be inaudible. Since it is impossible to determine exactly at what point the softened passage becomes inaudible, the performer should refrain from trying to be heard.

Parts, perusal scores and mp3 files are available on <http://www.marcparella.com>

Double Bass

# Mille Sonitus

Marc Parella

♩ = 104

4

*f* *mf* *p* *pp*

10

3

*ppp* *mf*

*p* *pp* *ppp* *f* *ff*

20

*p* *f* *mf* *p* *pp*

30

*div.*

*f*

Ritard. *Meno Mosso* ♩ = 88

*p* *mp* *ppp*

Double Bass

40

*pp* *unison*

50

3 3

Tempo Primo ♩ = 104

*p* *f* *p* *f*

60

*sfz* *ff*

*f cresc.* *ff* *ff* *p*

70

*ff* *ff* *p* 3 5

Ritard.

A Tempo

80

*f* *p*

*p* *p*

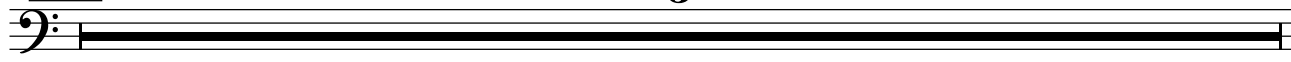
*f* *sfz* *pizz.* *pizz. naturale*

Double Bass

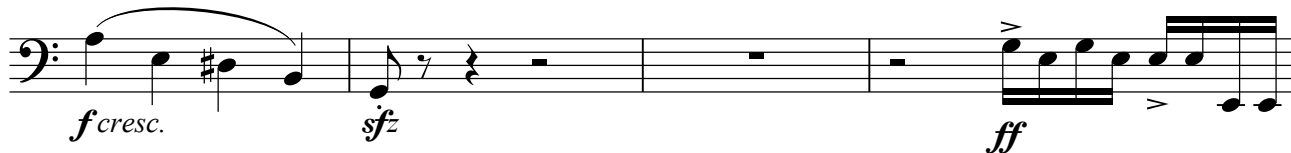
3

90

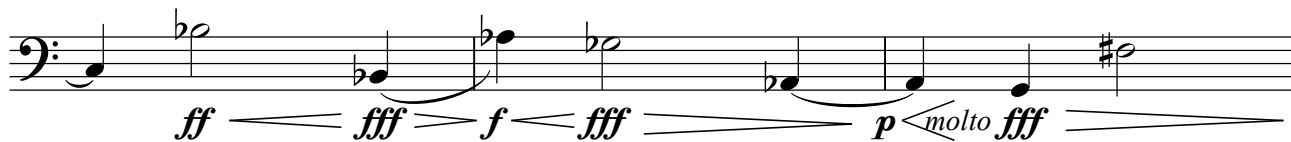
5



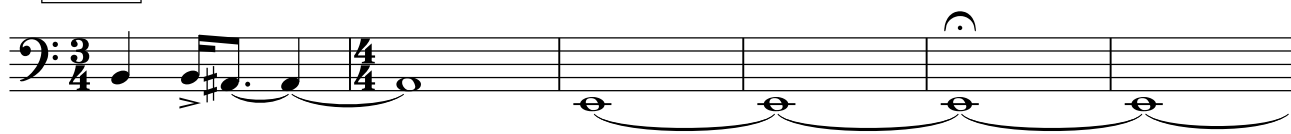
*arco*



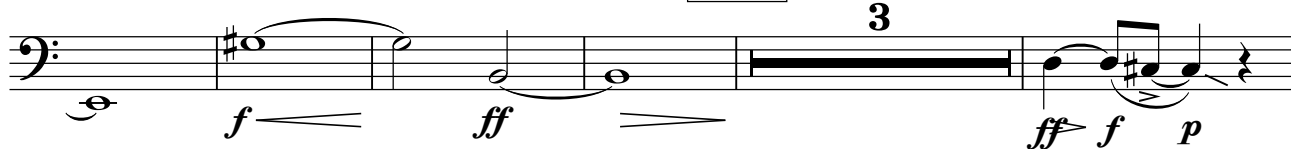
100



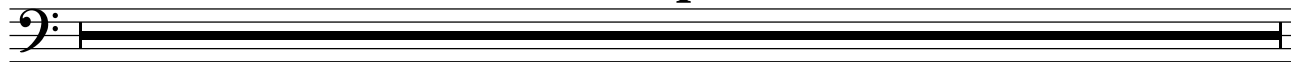
110



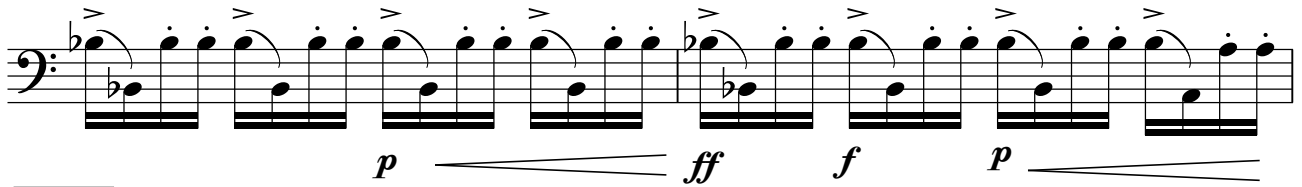
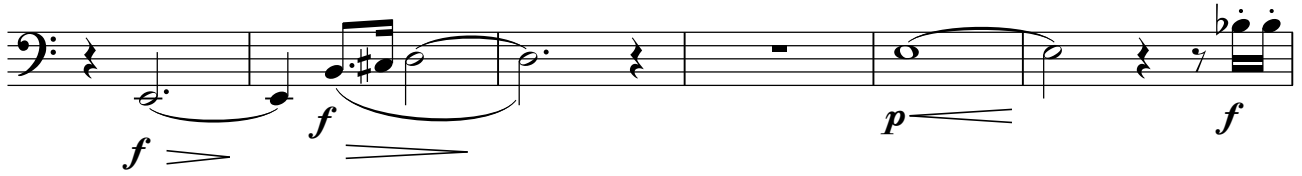
120



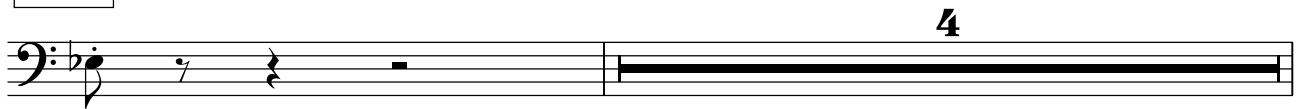
4



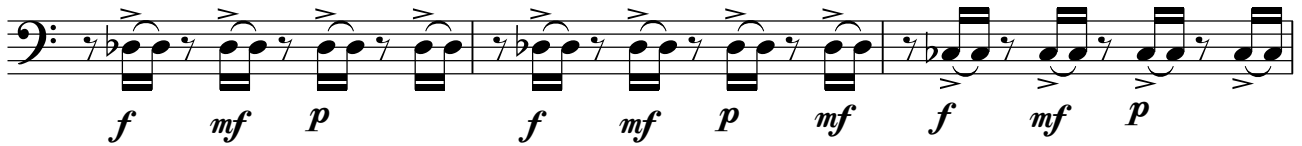
130



140



*ff*



150

