

Percussion II
Wind Chimes Tenor Drum
Vibraphone Cymbals
Tubular Bells Triangle
Gong Snare Drum
Wood Block Bass Drum

Mille Sonitus

Overture of a Thousand Sounds

Marc Parella

Performance Notes:

Performers should refrain from adding unnecessary crescendi or decrescendi unless specifically notated. The purpose of applying highly expressive dynamics is to create a natural decay effect similar to an echo in the section or ensemble. At times the decay effect will deteriorate to a ppp and the performer's passage may be inaudible. Since it is impossible to determine exactly at what point the softened passage becomes inaudible, the performer should refrain from trying to be heard.

Parts, perusal scores and mp3 files are available on <http://www.marcparella.com>

Percussion II
Wind Chimes Tenor Drum
Vibraphone Cymbals
Tubular Bells Triangle
Gong Snare Drum
Wood Block Bass Drum

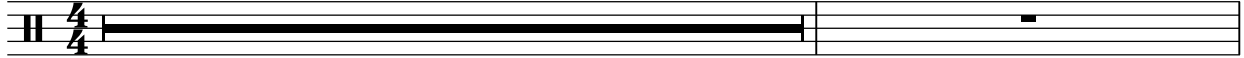
Mille Sonitus

Marc Parella

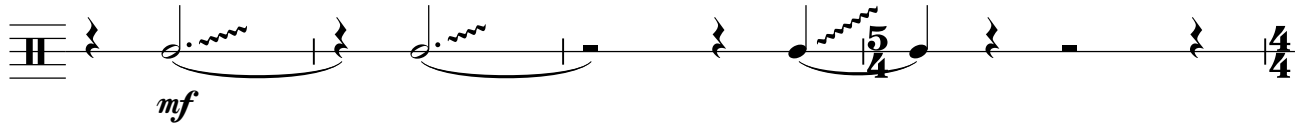
♩ = 104

10

9



Wind Chimes



mf

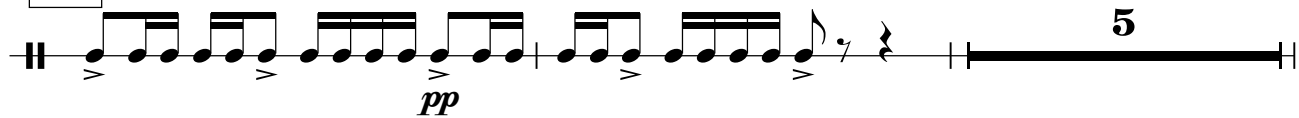
Tenor Drum

4



ff *f* *p*

20

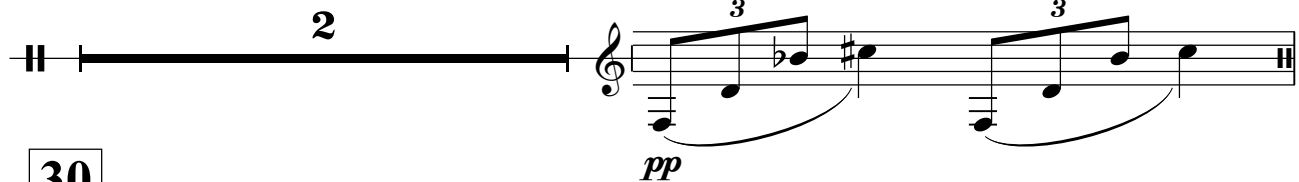


pp

5

Vibraphone

2



pp

30



5

Ritard.

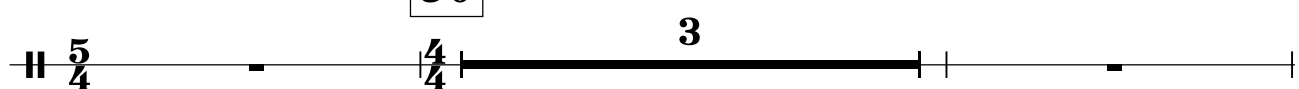
Meno Mosso ♩ = 88

40



2 9

50

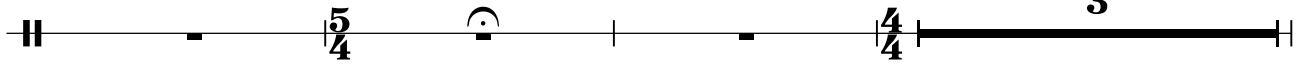


3

Tempo Primo ♩ = 104
5

60

4



70

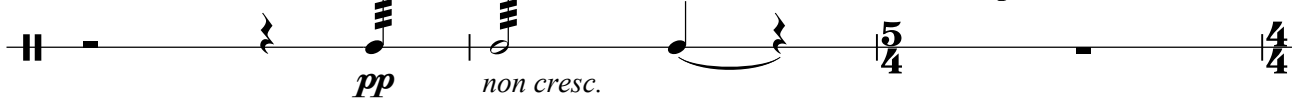
7



Ritard.

Sus. Cymbals

A Tempo



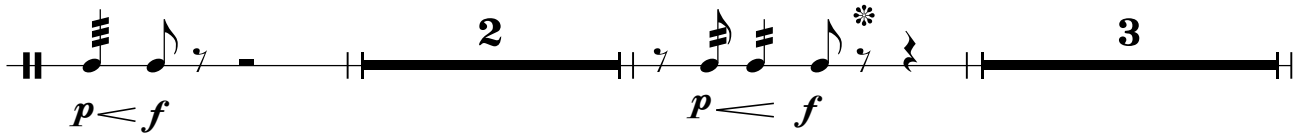
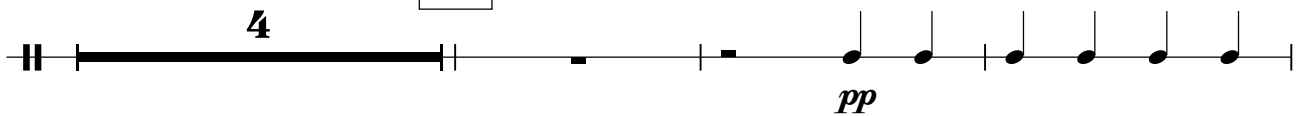
80

6



90

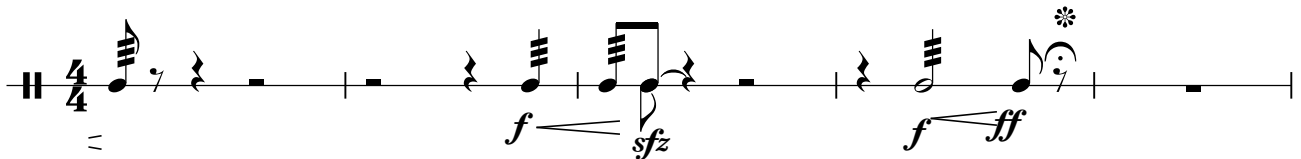
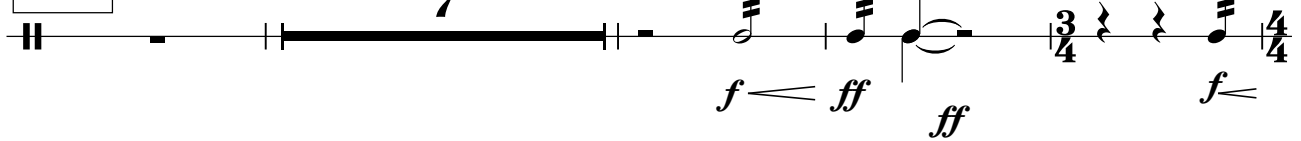
Sus. Cymbals



100

7

110



Tubular Bells

f *mf* *p* *pp*

120

4 Triangle *mf* 3

130

2 2 Gong *p* 5

140

Snare Drum

p *ff* 3

6 6 6 6 6 6 6 6 *p*

6 6 6 6 6 6 6 6 *cresc.* *mf*

6 6 6 6 6 6 6 6 *mf*

150

6 6 3 2 *mf*

4 3 3 3 6 2/4 *p* *f* 4/4

160

170

180

190

200

Piú Mosso $\text{♩} = 96$ **210**

Two measures of rests, each marked with a '2' above a thick black bar.

Tempo Primo $\text{♩} = 104$
Wood Block

Wood Block part starting with a series of eighth notes and rests, marked *mf*.

Wood Block part with a series of eighth notes and rests.

Wood Block part with a series of eighth notes and rests, marked *f*.

220

Wood Block part with a series of eighth notes and rests, ending with a '4' measure rest.

230

Bass Drum

Bass Drum part with a series of eighth notes and rests, marked *f* and *ff*.

Bass Drum part with a series of eighth notes and rests, marked *mf* and *ff*.

240

Bass Drum part with a series of eighth notes and rests, marked *p*.

250

Bass Drum part with a series of eighth notes and rests, marked *p*.